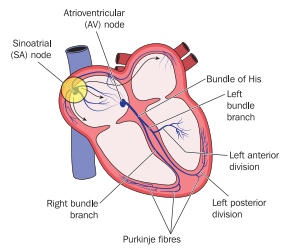




Cardiac pacemakers in medicine

Pacemakers and sinus node dysfunction



A heart rate that....

- is too fast
- is too slow
- pauses
- combination

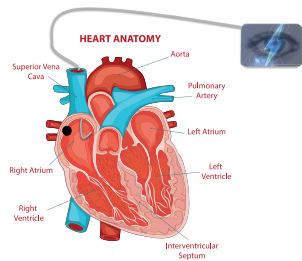
Sinus node dysfunction



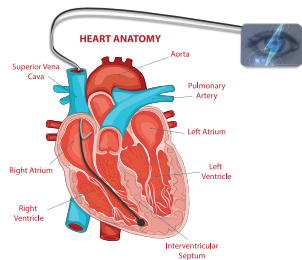
Sinus bradycardia / sinus pauses



Sinus bradycardia / sinus pauses



Single-chamber pacemaker (atrial)



Dual-chamber pacemaker

Takeaway message



Implanting a single-chamber pacemaker will avoid sinus pauses or bradycardia as a result of sinus node dysfunction. However, it is **most common to implant a dual-chamber device** in case the AV node becomes faulty too.
